



LIT

ACTIVE LEADERSHIP IN
EDUCATION, ENTERPRISE
AND ENGAGEMENT

What do LIT Graduates do?



First Destinations Report by LIT Careers Service

School of Business & Humanities
Class of 2013

First Destinations Survey – Graduates 2013

Contents

Page No.

1.0	Introduction	3
1.1	Overview of Results	3
1.2	Progression within the Institute	5
1.3	How do graduates source employment?	6

Findings by Department & Programme

2.0	Department of Finance & Professional Studies	7
2.1	B.Bus. (Hons.) in Accounting & Finance (Level 8)	8
2.2	B.A. (Hons.) in Business Studies with Event Management (Level 8)	9
2.3	B.A. (Hons.) in Business Studies with Tourism Management (Level 8)	10
2.4	B.Bus. (Hons.) in Law & Taxation (Level 8)	11
3.0	Department of Humanities	12
3.1	B.A. (Hons.) in Applied Social Studies in Social Care (Level 8)	13
3.2	B.A. (Hons.) in Social & Community Studies (Level 8)	14
3.3	Higher Certificate in Arts in Culinary Arts (Level 6)	15
4.0	Department of Business Management	16
4.1	B.Bus. (Hons.) in Marketing & Management (Level 8)	17

School of Business & Humanities

1.0 Introduction

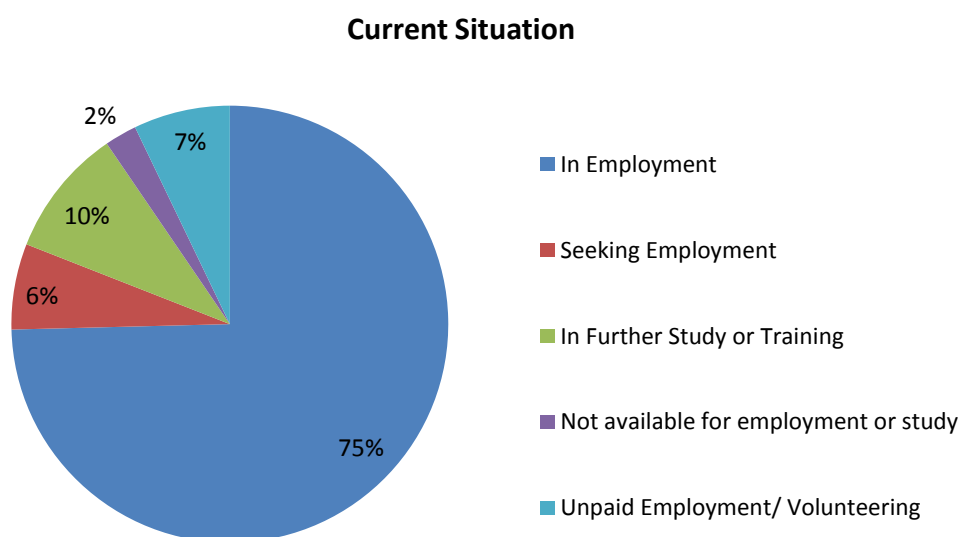
This report presents detailed information on the First Destinations of graduates for 2013 from the School of Business & Humanities at Limerick Institute of Technology. The results provide an important indication of graduate trends over a period of remarkable change in the Irish economy.

The results for the School of Business & Humanities reflect the employment and further study patterns of 370 graduates of full-time Higher Certificate (Level 6), Degree (Level 7) and Honours Degree (Level 8) programmes offered. This year's report reflects the structural changes that occurred in this school in 2013, with the emergence of the Department of Business Management, the Department of Finance & Professional Studies and the migration of the *B.A. (Hons.) Social & Community Studies* from LIT Tipperary into the Department of Humanities. Thus, direct comparisons between this and last year's overall School data cannot be made this year. The rate of response for the Class of 2013 was 34%.

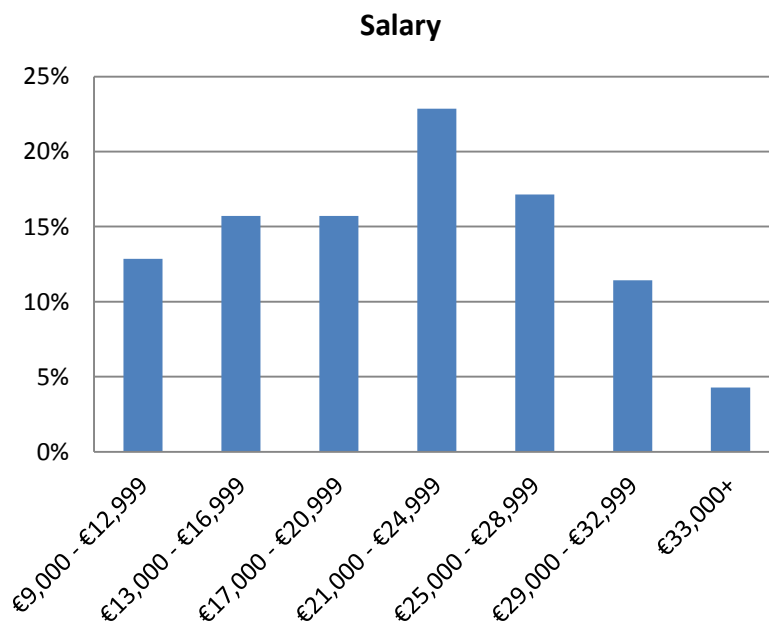
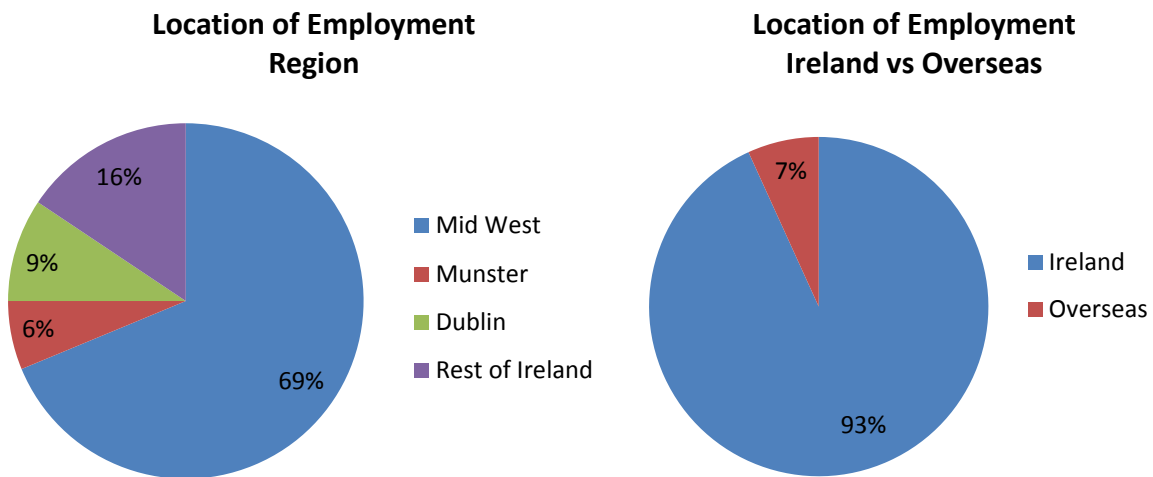
1.1 Overview of Results

In summary;

- 75% of graduates surveyed from the Class of 2013 are in employment.
- 6% of graduates were seeking employment at the time of the survey.
- The number pursuing further study is at 10% this year.
- 7% of the Class of 2013 are in unpaid employment or volunteering.



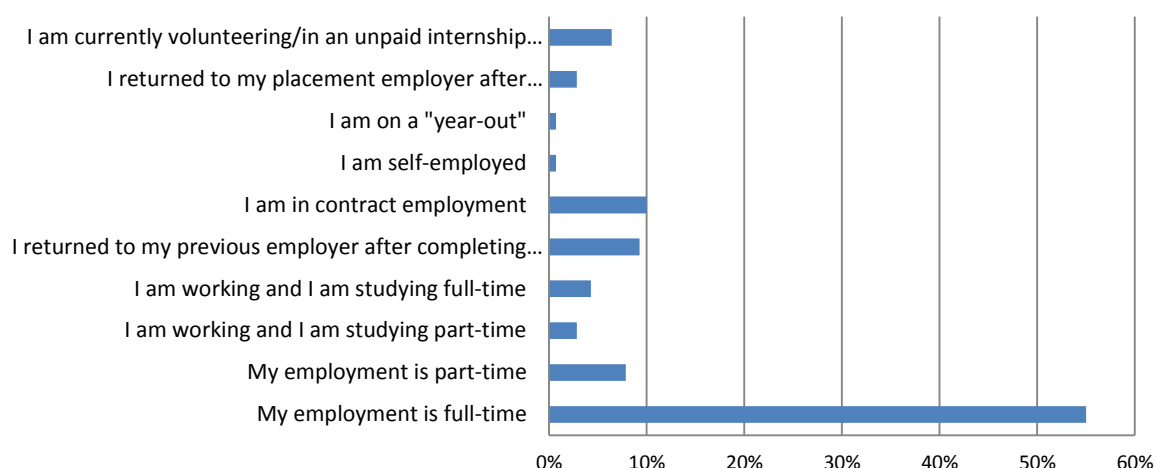
- 93% of graduates surveyed from the School of Business & Humanities have remained in Ireland to secure employment, reflecting a slowing trend for migration amongst graduates. This is the best figure across all LIT schools this year.
- Of those who remained in Ireland, 69% have remained in the Mid-West region.



33% of graduates surveyed are on starting salaries of €25,000 and higher per annum. The gradIreland *Graduate Salary & Recruitment Trends Survey 2013/14*¹ found that the actual median starting salary paid to graduates hired in 2013/14 is €27,690. 55% of graduates are in full-time employment.

¹ Published July 2014

Nature of Employment

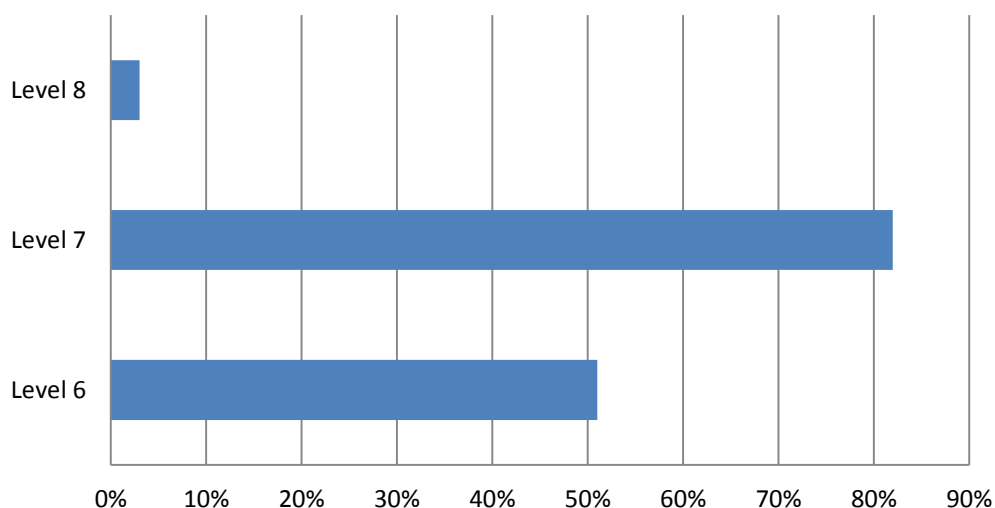


1.2 Progression within the Institute

A large proportion of graduates from Level 6 & Level 7 programmes offered by the School of Business & Humanities progress to higher level programmes in the Institute.

- In 2013, 51% of students continued in the School from Level 6 onwards.
- 82% from Level 7 progressed; a big increase on 44% of the Class of 2012 Level 7 students.
- The number of Level 8 graduates continuing in the Institute is at 3% this year.

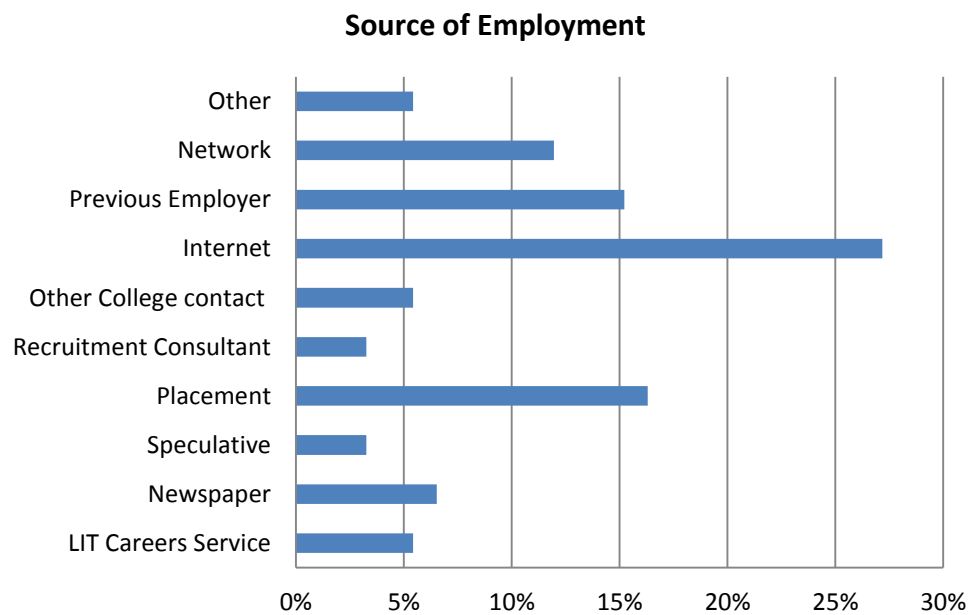
Progression within the Institute School of Business & Humanities



1.3 *How do Graduates source employment?*

As with the Class of 2012, this year we see a high figure of 27% for the number of graduates securing employment via the internet in 2013. This is a trend reflected throughout the Institute.

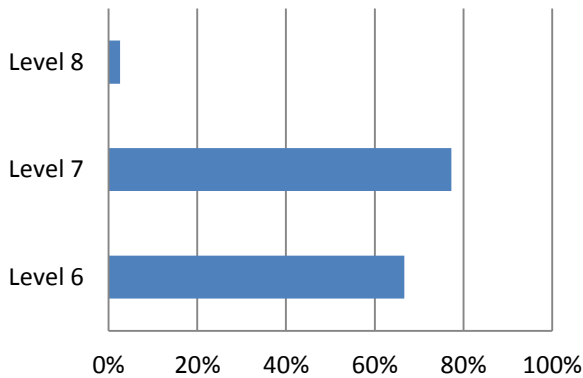
12% of students used their external network to secure employment, with 26% sourcing their employment via their LIT work placement, LIT's Careers Service or other LIT contacts.



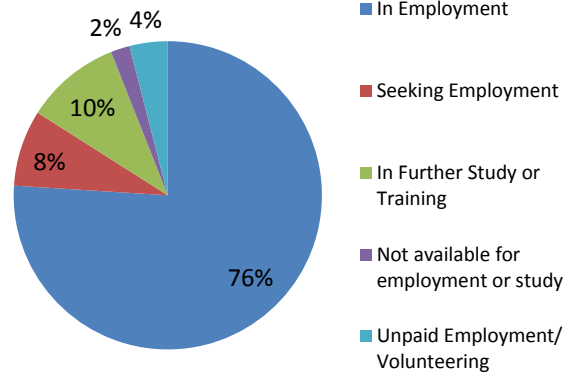
All Programmes Overview

2.0 Department of Finance & Professional Studies

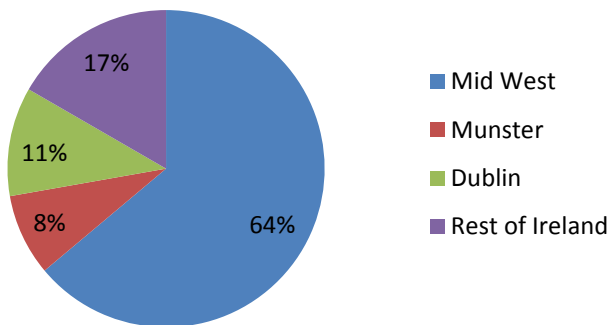
Progression within the Institute
Department of Finance & Professional Studies



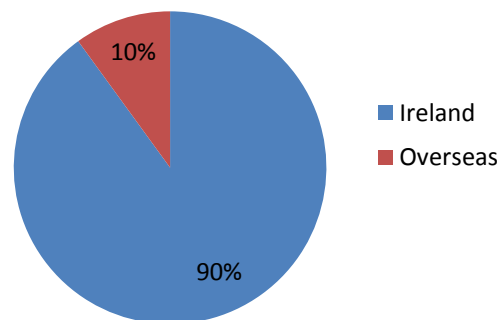
Current Situation



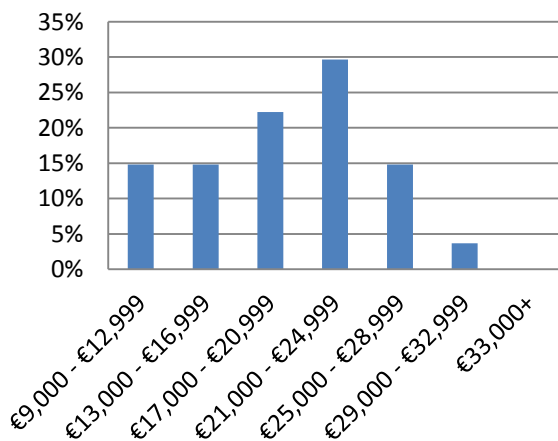
Location of Employment
Region



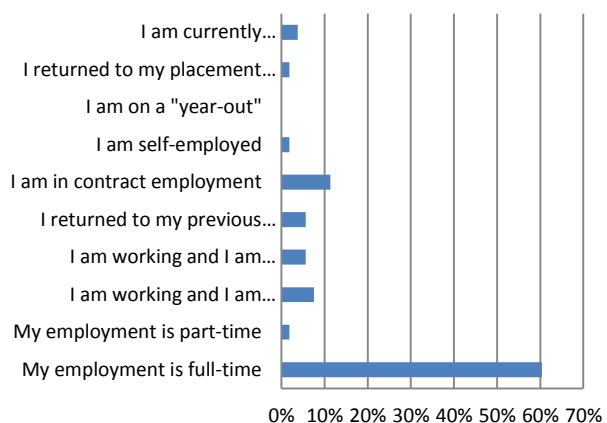
Location of Employment
Ireland vs Overseas



Salary



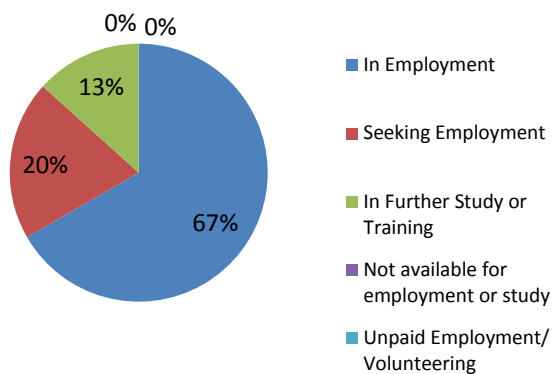
Nature of Employment



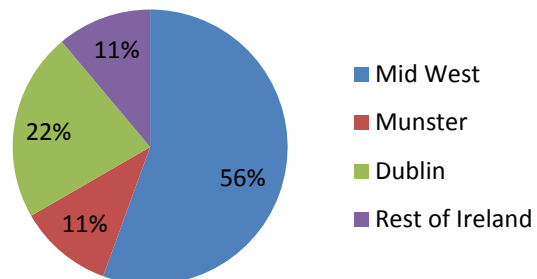
Low salaries reflect part-time employment and training contracts.

2.1 B.Bus. (Honours) in Accounting & Finance (Level 8)

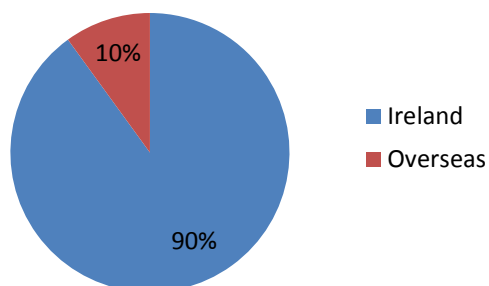
Current Situation



Location of Employment Region



Location of Employment Ireland vs Overseas



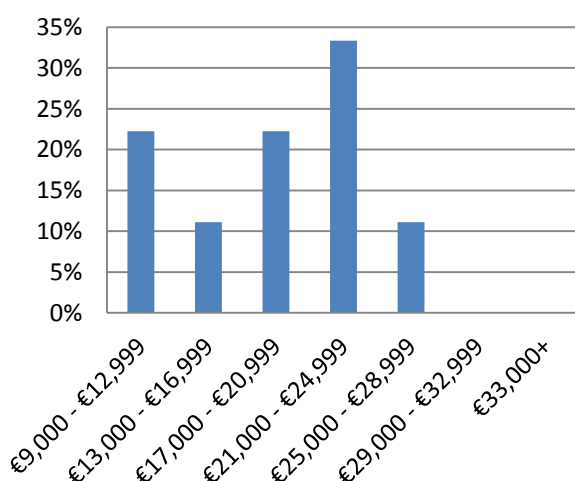
Employers Include:

- PWC
- Deloitte
- Office of the Revenue Commissioners
- MGM Accountants

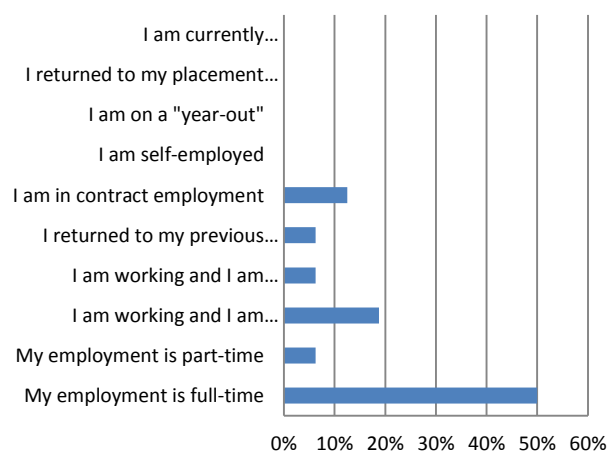
Job Titles Include:

- Trainee Auditor
- Trainee Accountant
- Audit Assistant
- Clerical Officer

Salary



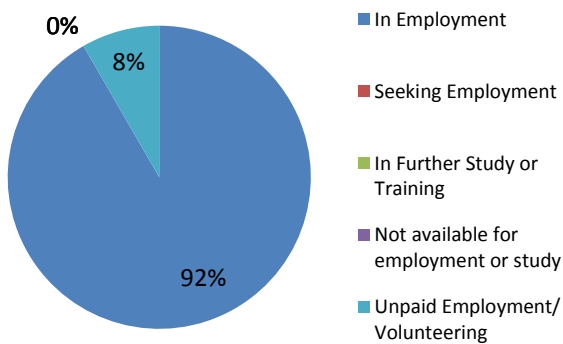
Nature of Employment



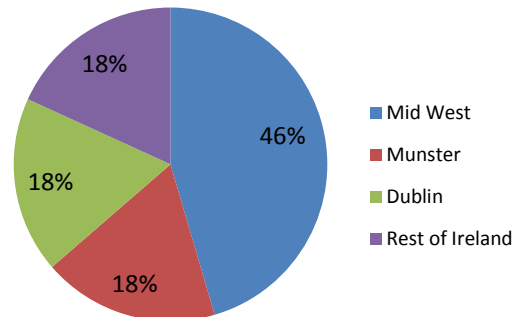
Low salaries reflect part-time employment and training contracts

2.2 B.A. (Hons.) in Business Studies with Event Management (L8)

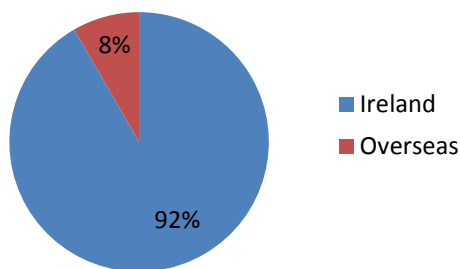
Current Situation



Location of Employment Region



Location of Employment Ireland vs Overseas



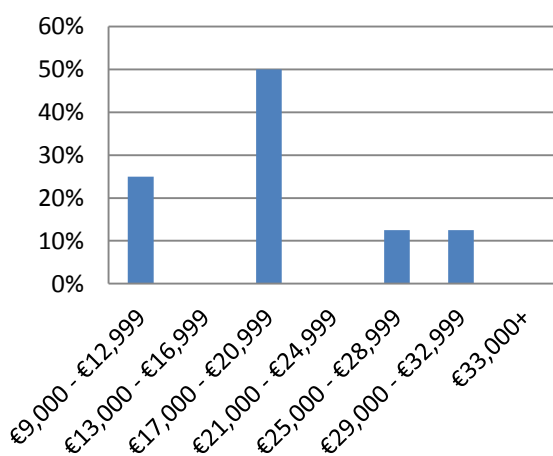
Employers Include:

- Elevate PR
- The Hunt Museum
- GAA Munster Council

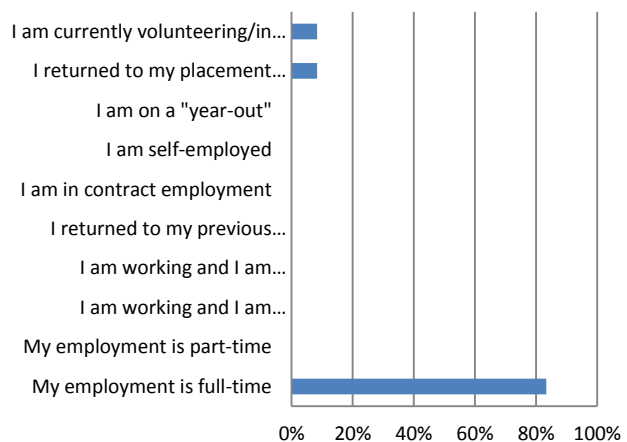
Job Titles Include:

- Events Assistant
- Account Executive
- Events & Logistics Manager

Salary

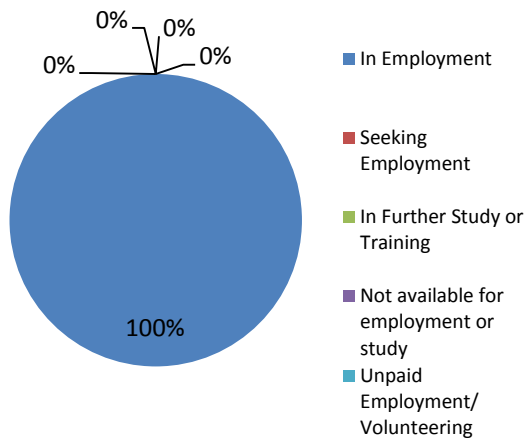


Nature of Employment

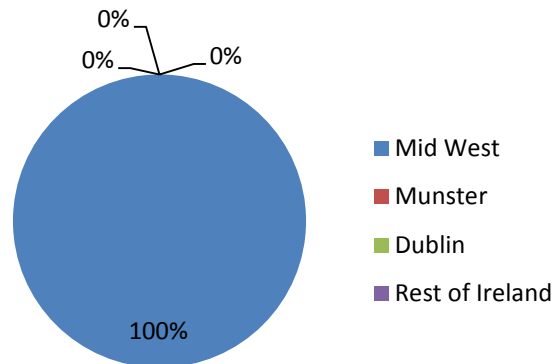


2.3 B.A. (Hons.) in Business Studies with Tourism Management

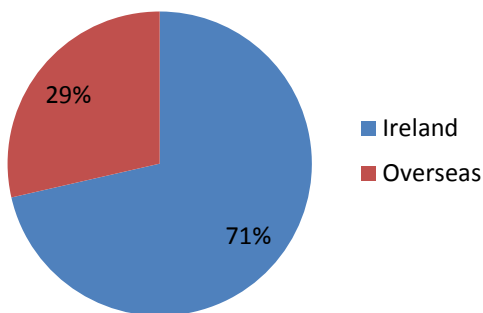
Current Situation



Location of Employment Region



Location of Employment Ireland vs Overseas



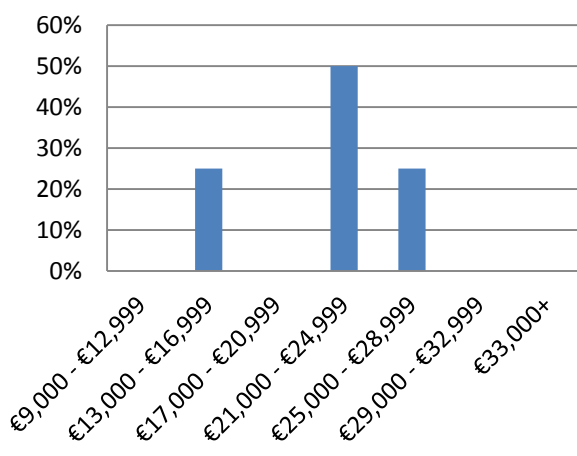
Employers Include:

- Woodlands House Hotel
- Limerick Strand
- Eurocamp

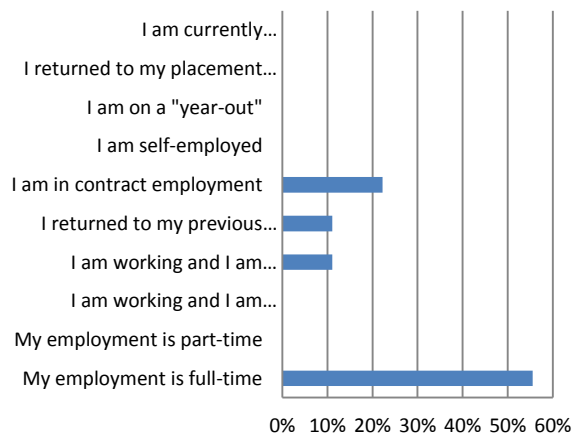
Job Titles Include:

- Meetings, Events & Wedding Co-ordinator
- Holiday Courier in charge

Salary

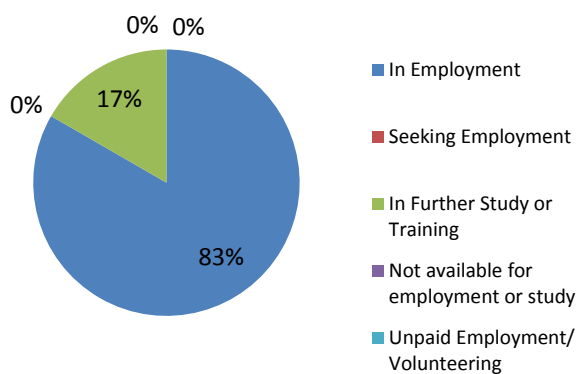


Nature of Employment

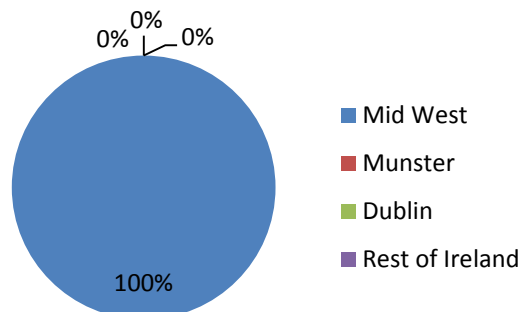


2.4 B.Bus. (Honours) in Law & Taxation (Level 8)

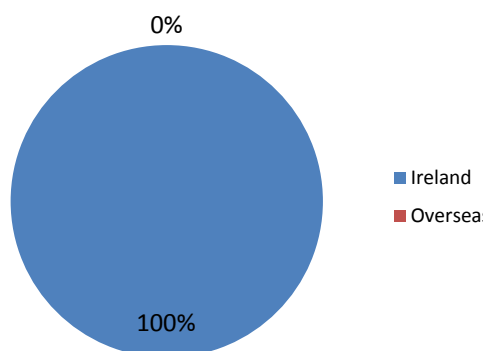
Current Situation



Location of Employment Region



Location of Employment Ireland vs Overseas



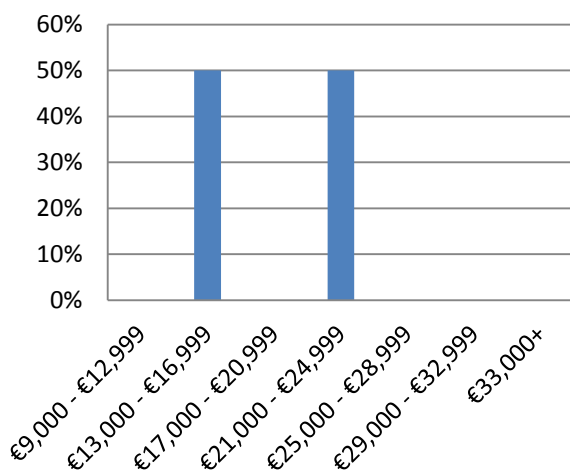
Employers Include:

- Northern Trust
- Glass Lewis
- HLB McKeogh Gallagher Ryan

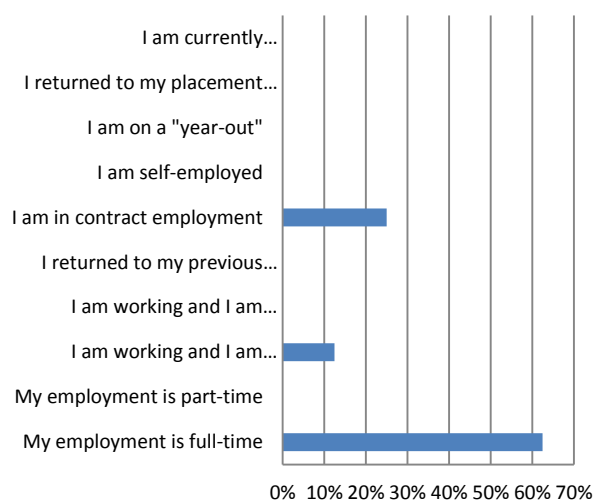
Job Titles Include:

- Tax Analyst
- Tax Trainee
- Research Associate

Salary



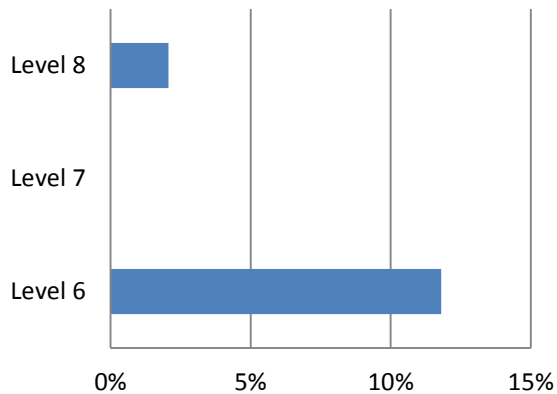
Nature of Employment



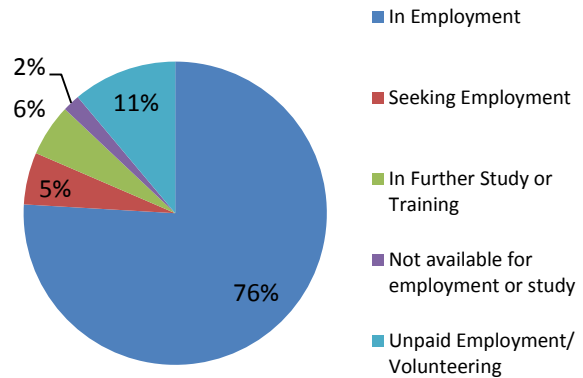
Low salaries reflect training contracts.

3.0 Department of Humanities

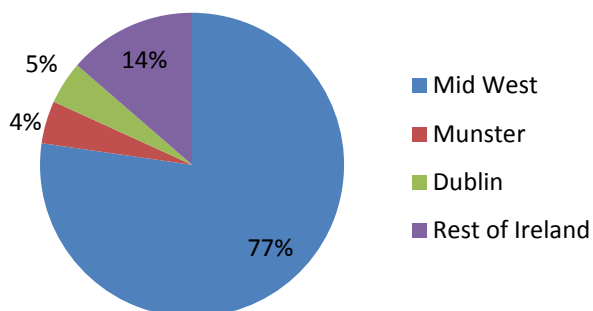
**Progression within the Institute
Department of Humanities**



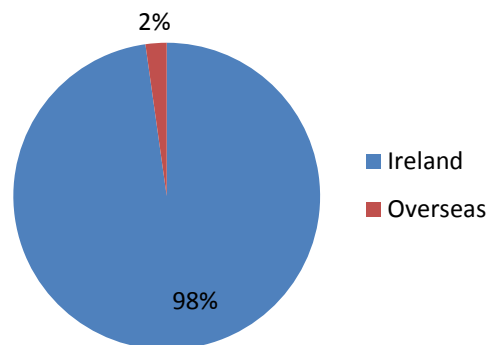
Current Situation



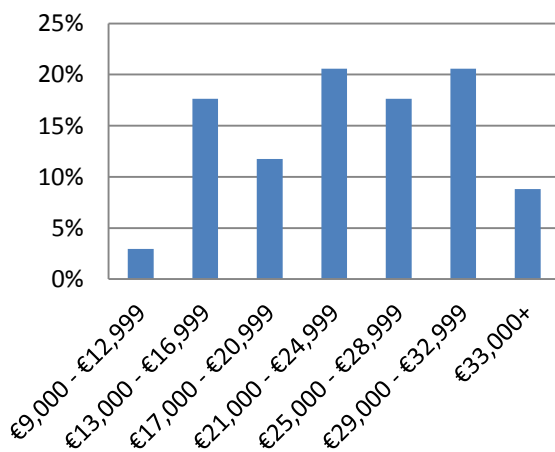
**Location of Employment
Region**



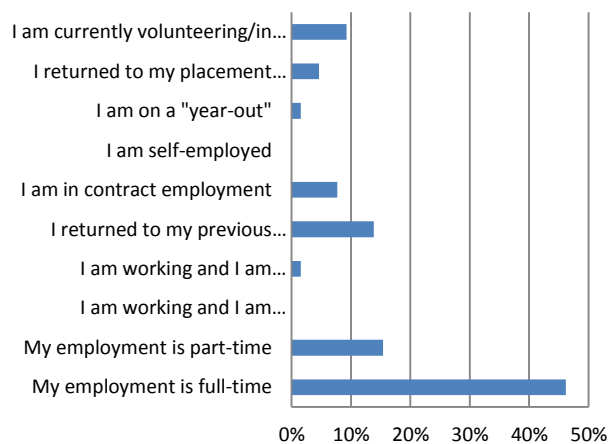
**Location of Employment
Ireland vs Overseas**



Salary



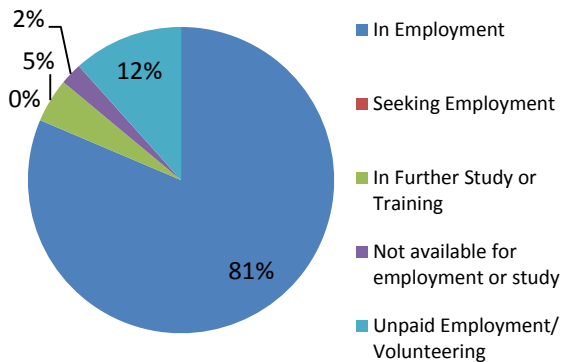
Nature of Employment



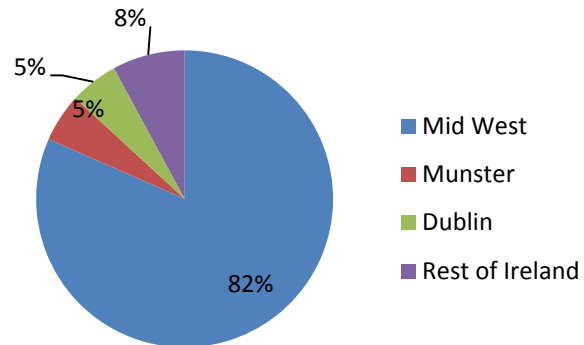
Low salaries reflect part-time employment.

3.1 B.A. (Hons.) in Applied Social Studies in Social Care (Level 8)

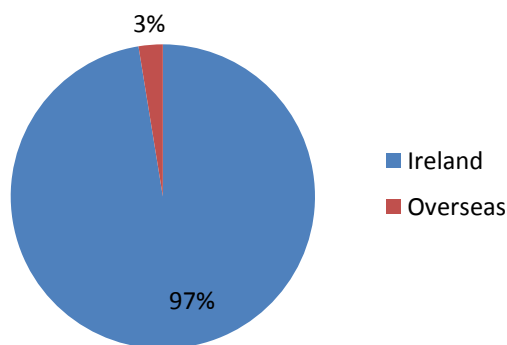
Current Situation



Location of Employment Region



Location of Employment Ireland vs Overseas



Employers Include:

- Novas Initiatives
- Brothers of Charity
- Sophia Housing
- Extern

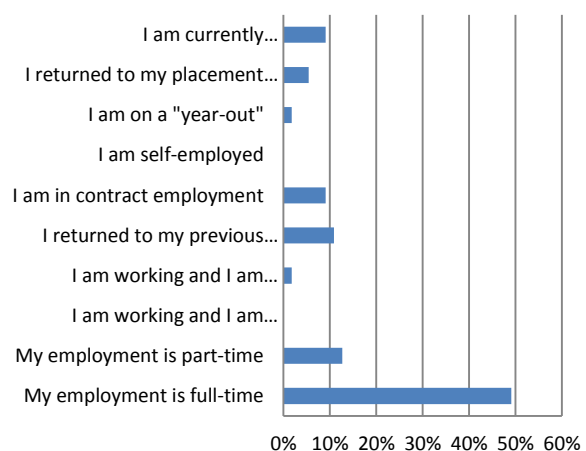
Job Titles Include:

- Positive Behaviour Support Team Leader
- Social Care Worker
- Support Care Worker
- Family Support Worker

Salary



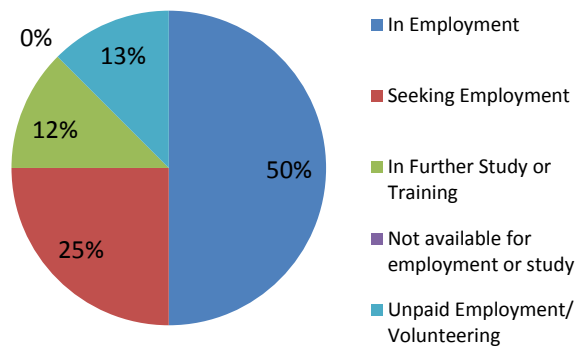
Nature of Employment



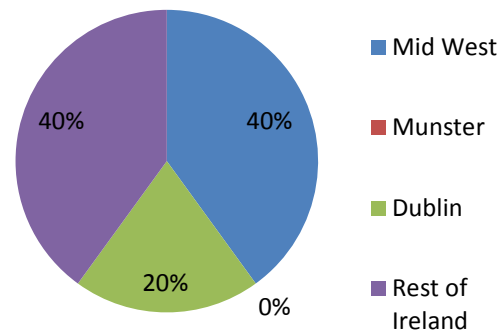
Low salaries reflect part-time employment.

3.2 Bachelor of Arts (Hons.) in Social and Community Studies (Level 8)

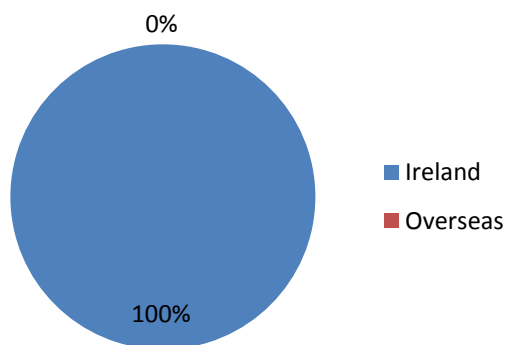
Current Situation



Location of Employment Region



Location of Employment Ireland vs Overseas



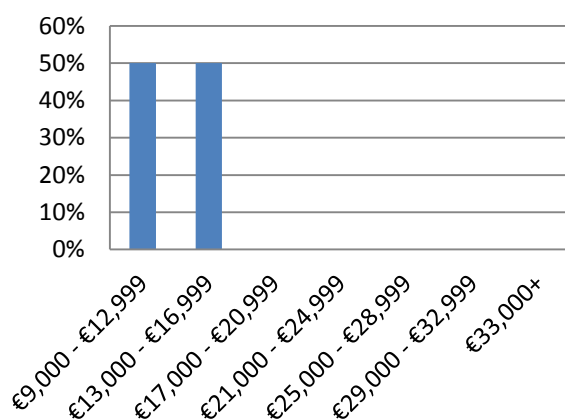
Employers Include:

- TRYS
- Positive Care Ireland

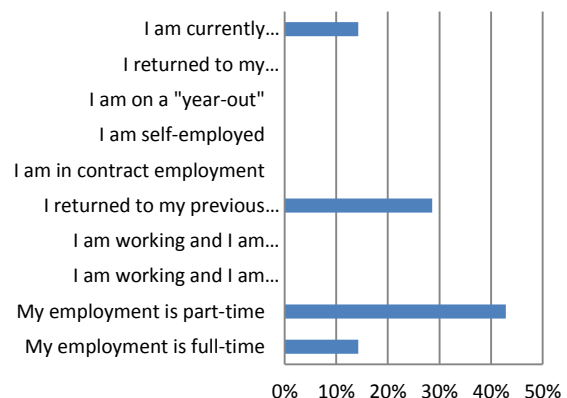
Job Titles Include:

- Youth Worker
- Social Care Worker

Salary



Nature of Employment



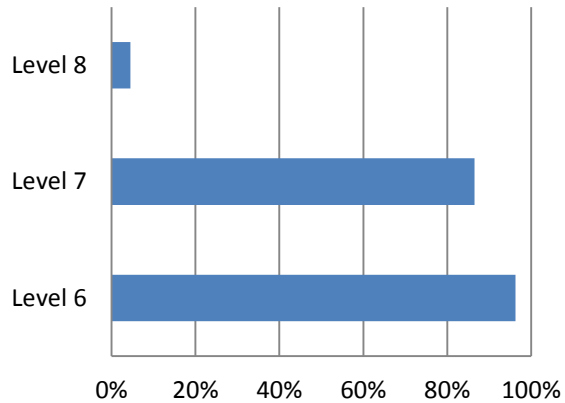
Low salaries reflect internships and part-time employment.

3.3 Higher Certificate in Arts in Culinary Arts (Level 6)

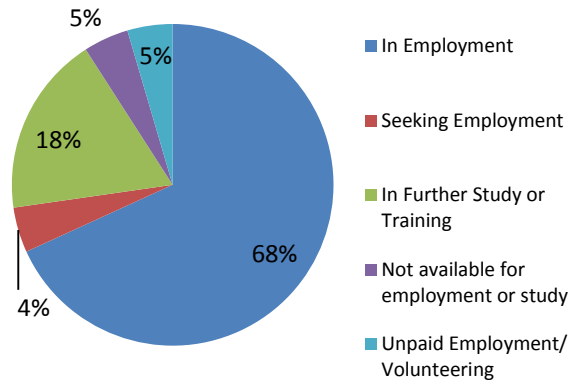
Graduates contacted on numerous occasions; no information provided.

4.0 Department of Business Management

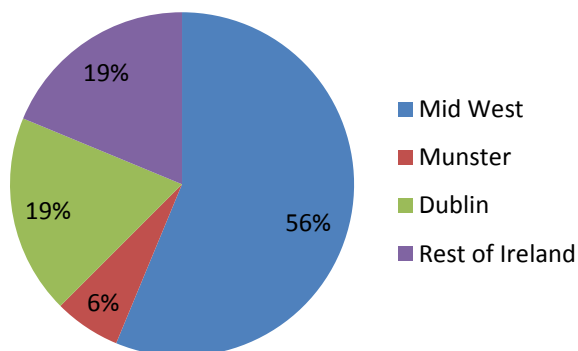
**Progression within the Institute
Department of Business Management**



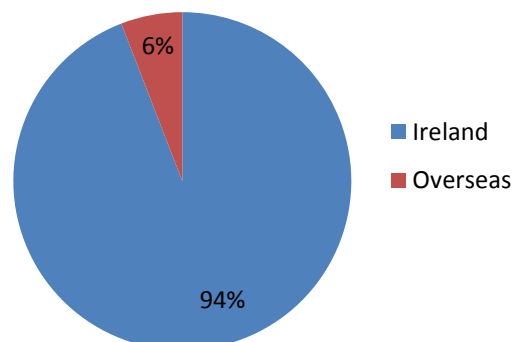
Current Situation



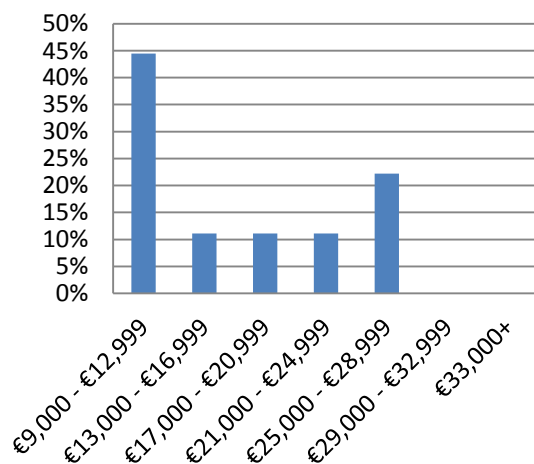
**Location of Employment
Region**



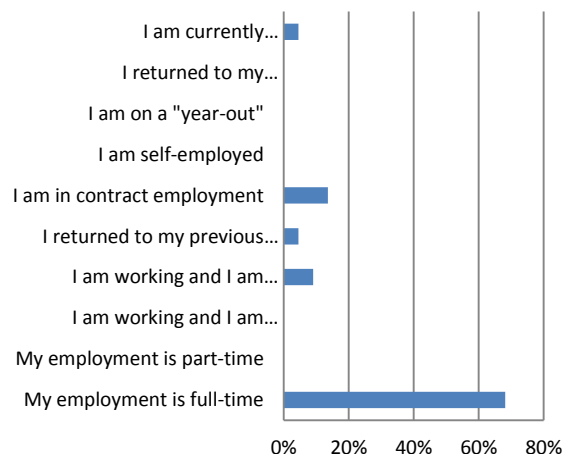
**Location of Employment
Ireland vs Overseas**



Salary

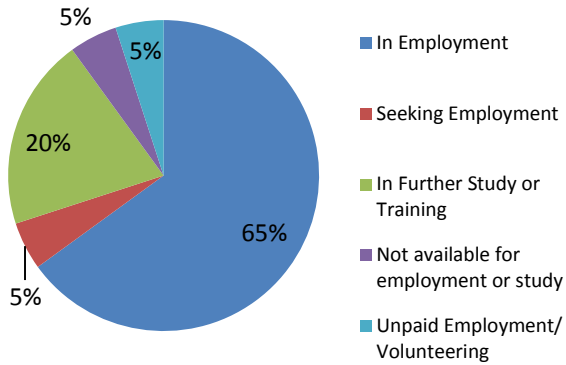


Nature of Employment

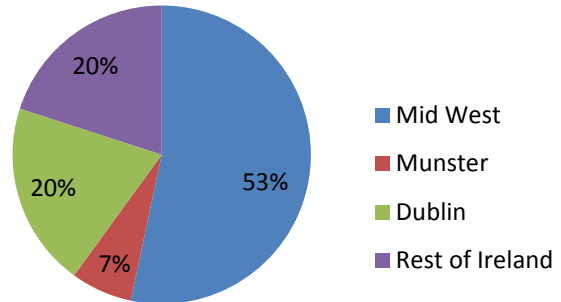


4.1 B.Bus. (Honours) in Marketing & Management (Level 8)

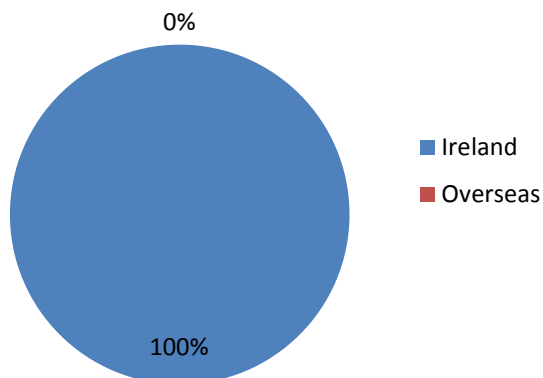
Current Situation



Location of Employment Region



Location of Employment Ireland vs Overseas



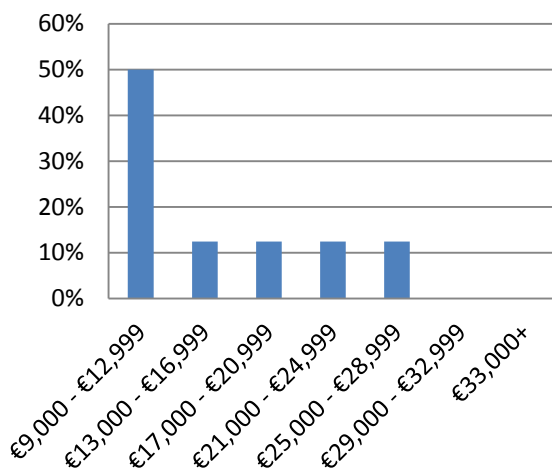
Employers Include:

- Chemisal Ltd.
- GIRT Mobile
- ZOO.Digital
- GlaxoSmithKline
- Mary Immaculate College

Job Titles Include:

- Junior Marketing Executive
- Account Executive
- Financial Assistant

Salary



Nature of Employment

