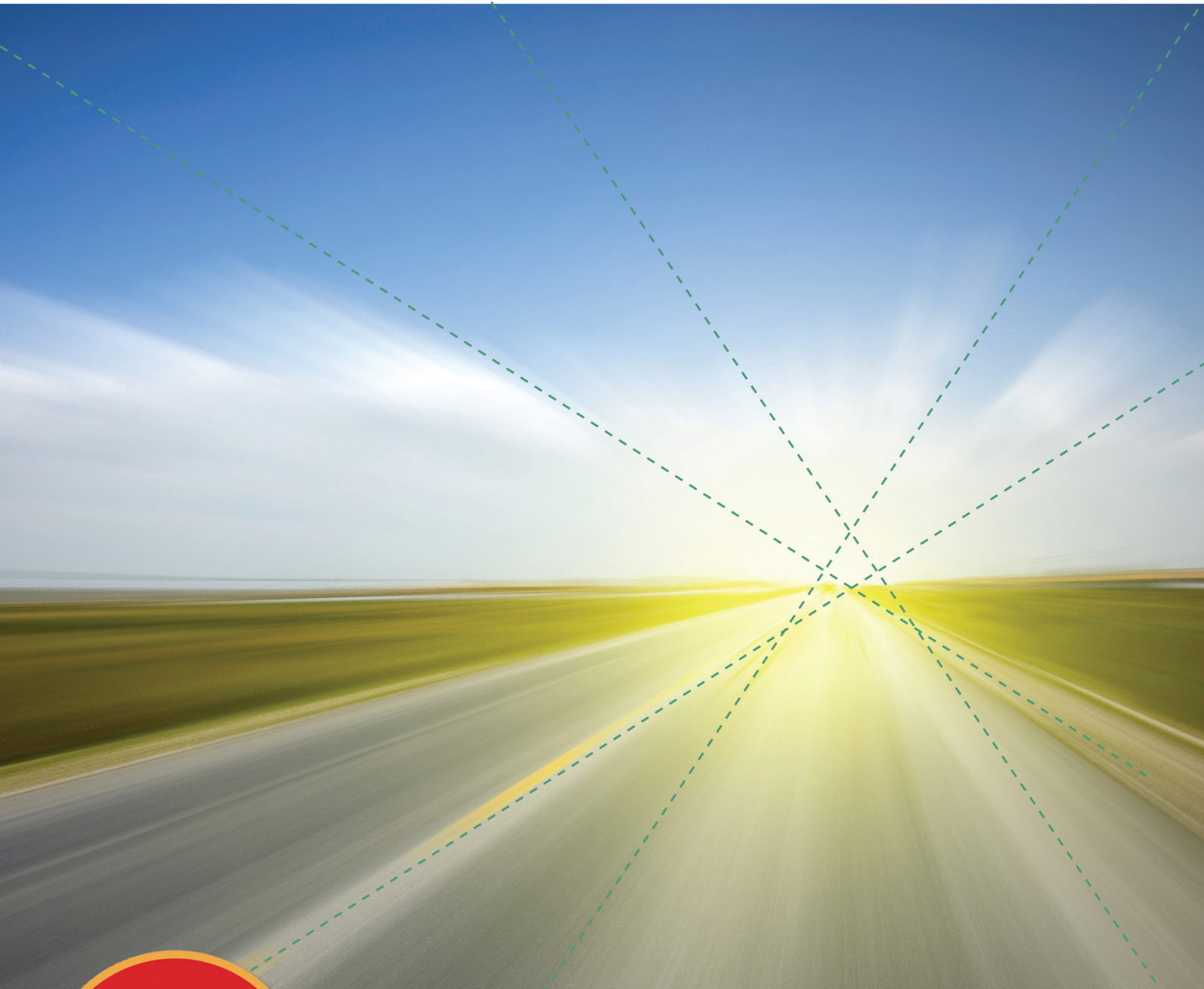




# LIT

ACTIVE LEADERSHIP IN  
EDUCATION, ENTERPRISE  
AND ENGAGEMENT



Careers Service: Report

**School of the Built Environment**  
Class of 2012

## First Destinations Survey – Graduates 2012

### *Contents*

### *Page No.*

1.0	Introduction	3
1.1	Overview of results	3
1.2	Progression within the Institute	4
1.3	How do graduates source employment	5

### **Findings by Department & Programme**

2.0	Department of Built Environment Management	6
2.1	B.Sc. (Hons.) in Quantity Surveying	7
2.2	B.Sc. (Hons.) in Construction Management	8
2.3	B.Sc. (Hons.) in Property Valuation & Management	9
3.0	Department of Construction & Civil Engineering	10
3.1	B. Sc. (Hons.) Civil Engineering Management	11
3.2	B.Eng. in Civil Engineering	12

# School of the Built Environment

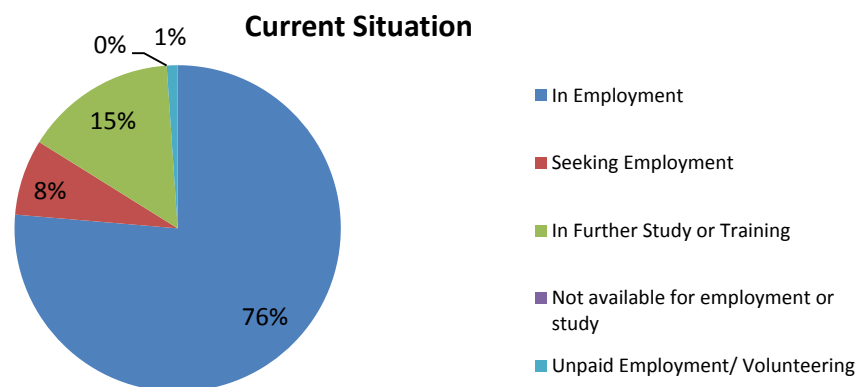
## 1.0 Introduction

This report presents detailed information on the First Destinations of Limerick Institute of Technology, School of the Built Environment graduates of 2012. The results provide an important indication of graduate trends over a period of remarkable change in the Irish economy, most particularly for the Construction Industry.

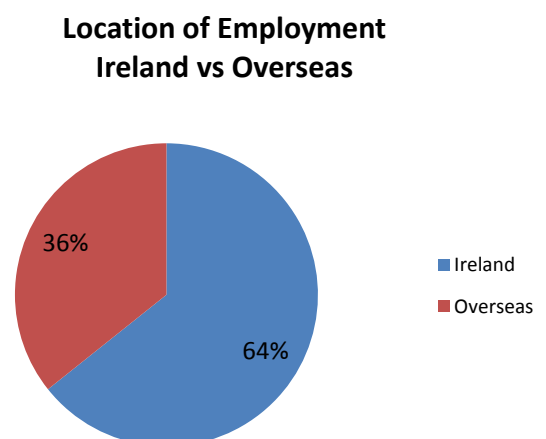
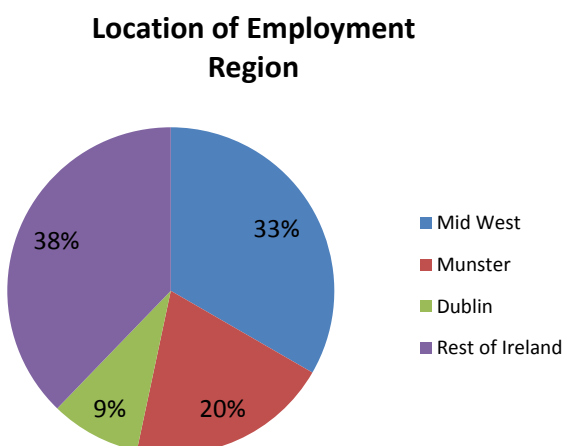
The results from the School of the Built Environment, reflect the employment and further study patterns of 199 graduates of full-time Higher Certificate (Level 6), Bachelor Degree (Level 7) and Honours Degree (Level 8) programmes. The rate of response was 46%.

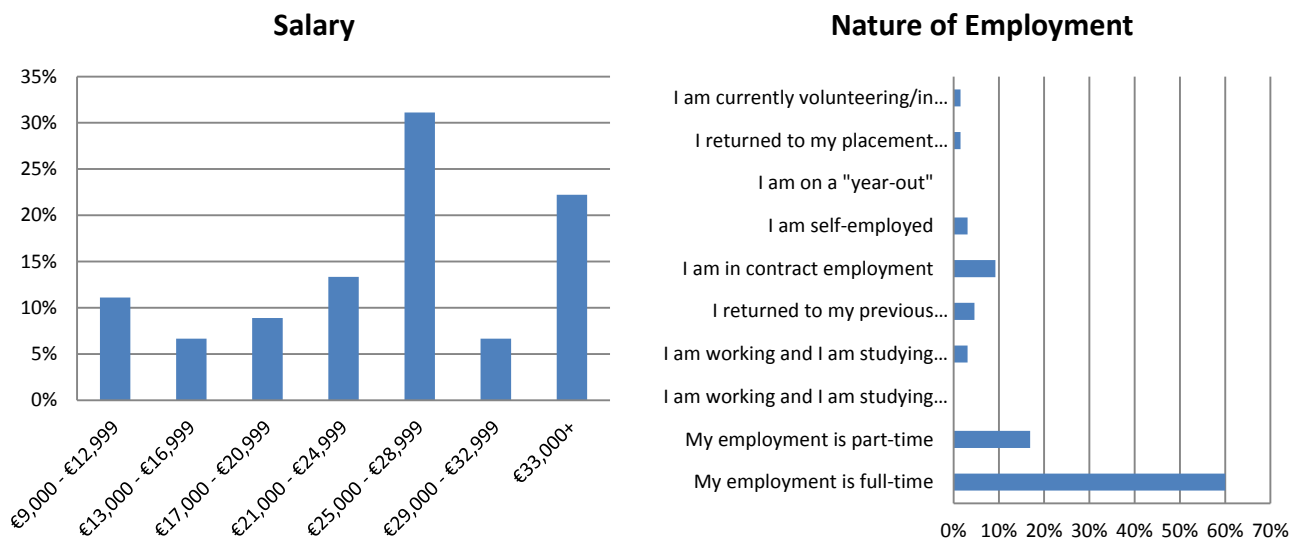
## 1.1 Overview of Results

In summary, 76% of graduates of courses within the School are in employment, up a remarkable 12% since 2011. In addition 15% are in further study, 1% have secured an unpaid internship and 8% were seeking employment at the time of the survey. Comparing this to the figures from the last number of years, there has been steady improvement since the low of 2009 when only 52% of graduates were securing employment. 8% is the lowest number seeking employment since we began this report in 2007.



Of the class of 2012 there remains a high number securing employment overseas. 36% of LIT graduates from the School of the Built Environment have travelled overseas to gain employment, a further increase of 9% since 2011. Graduates are gaining employment in countries such as Canada, the US, New Zealand, Australia and the UK.



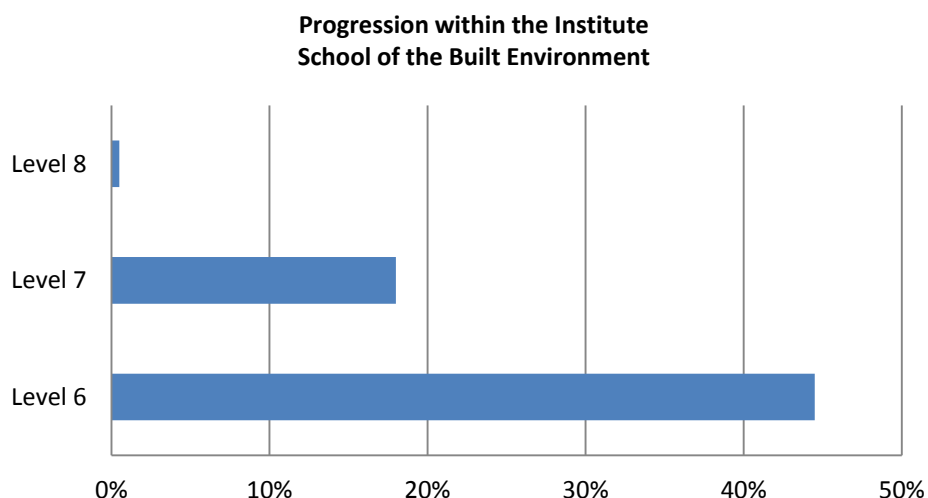


Of those who have secured employment from the School of the Built Environment, over 20% have continued to enjoy starting salaries in excess of €33,000 per annum. In fact, the majority of graduates (73%) across the school are achieving starting salaries of €21,000+ in line with average salaries in other disciplines.

## 1.2 Progression within the Institute

There is an environment of progression within LIT and this is reflected in the statistics in this report. A large proportion of students of Level 6 & Level 7 students continue in the Institute. This figure has increased year on year since 2007.

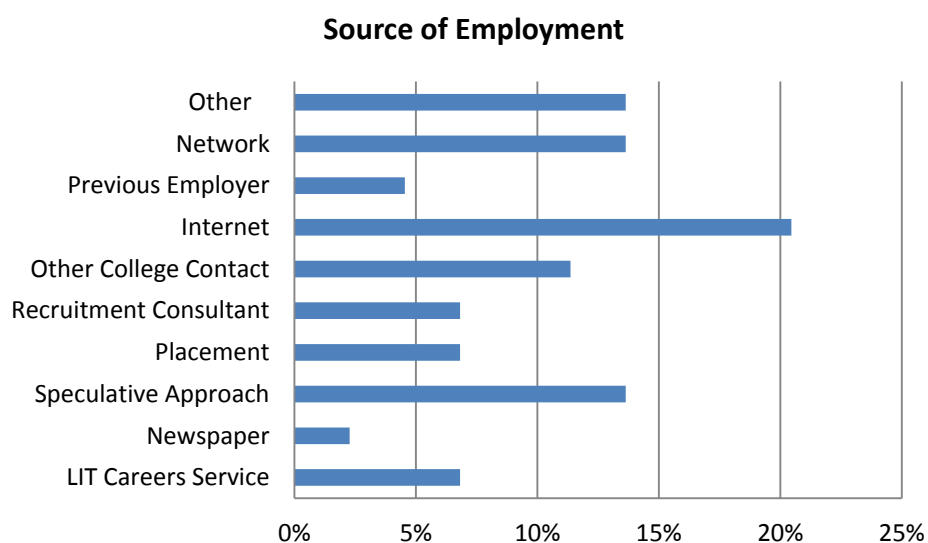
No responses were returned for a number of Level 7 programmes in the School of the Built Environment as the graduating numbers were too small or nobody graduated. These include B.Sc. Management (Craft), B.Sc. Construction - Health & Safety & B.Sc. Construction - Site Management.



### 1.3 How do Graduates source employment?

In terms of sourcing their graduate employment, graduates are using the Internet most frequently to secure employment. LinkedIn is a good example of a new approach to internet job hunting that may explain the increased use of the internet this year.

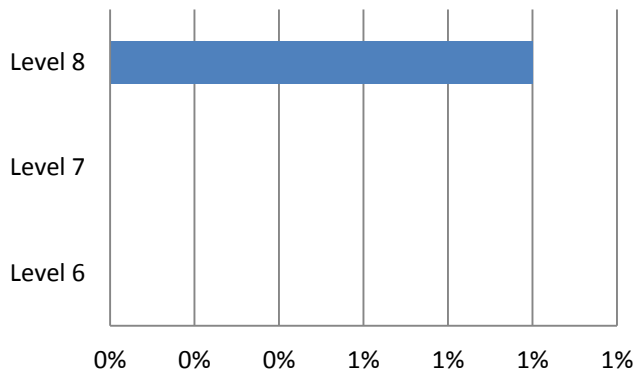
In addition, graduates have yet again been resourceful by using both their network and making speculative approaches to employers.



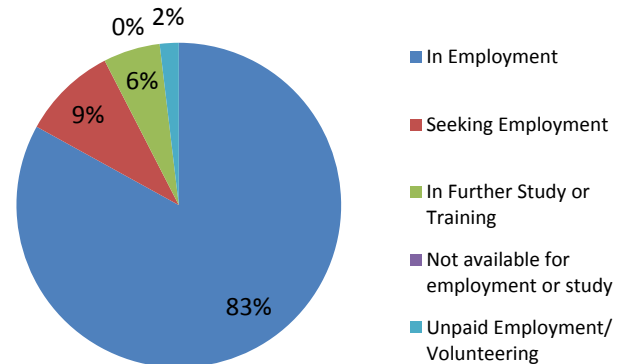
# All Programmes Overview

## 2.0 Department of Built Environment Management

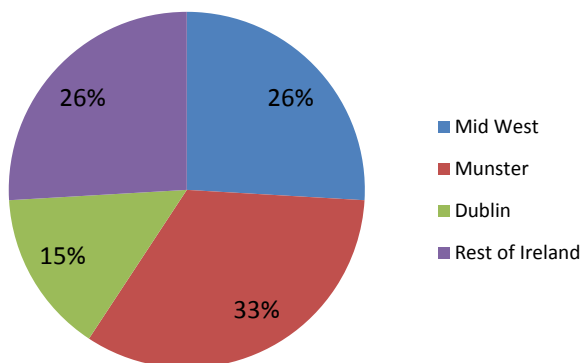
**Progression within the Institute  
Department of Built Environment  
Management**



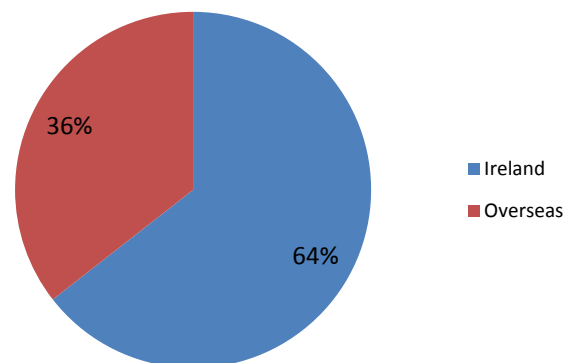
**Current Situation**



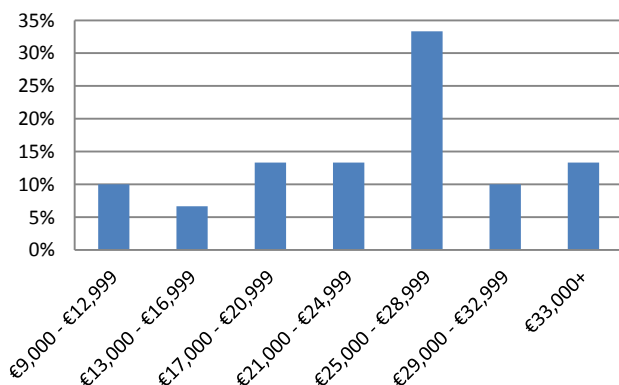
**Location of Employment  
Region**



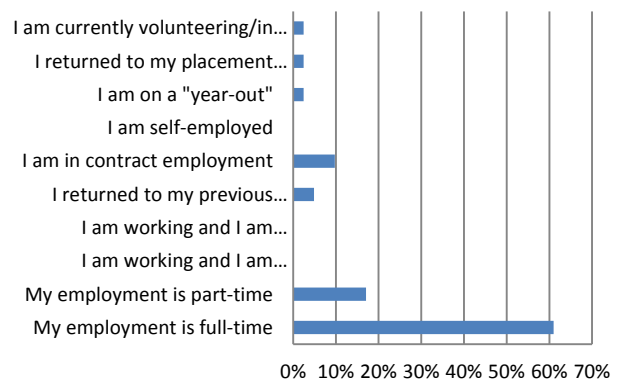
**Location of Employment  
Ireland vs Overseas**



**Salary**



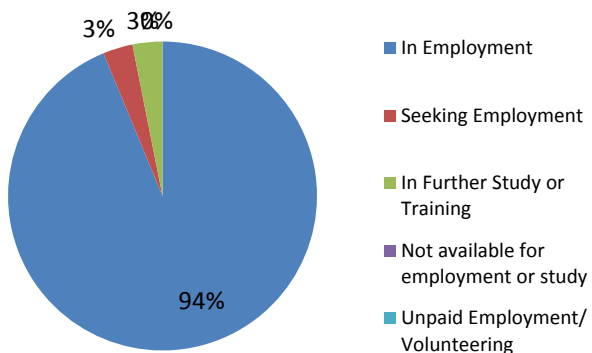
**Nature of Employment**



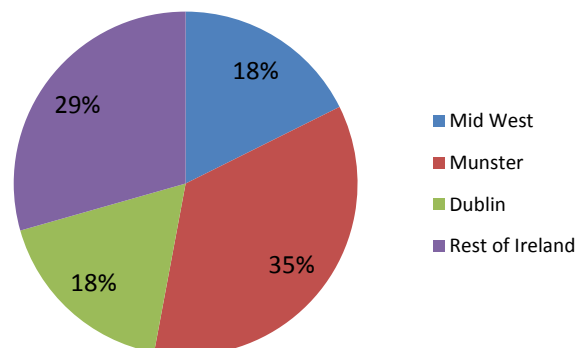
Low salaries reflect part-time employment

## 2.1 B.Sc. (Hons) in Quantity Surveying

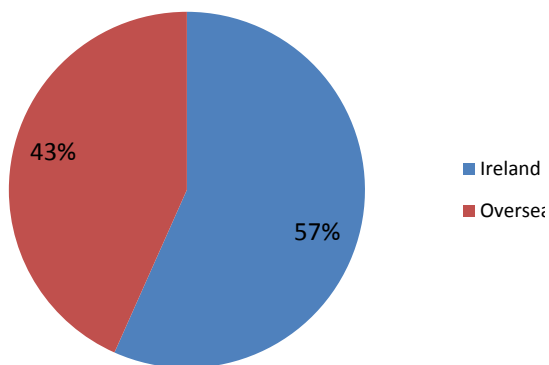
**Current Situation**



**Location of Employment Region**



**Location of Employment Ireland vs Overseas**



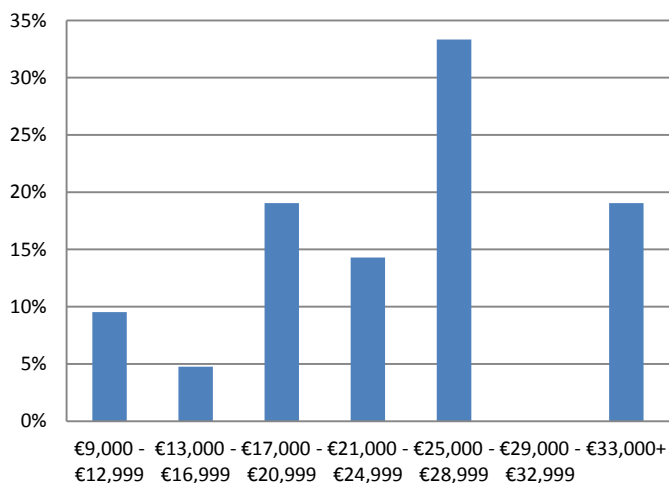
**Employers Include:**

- John Sisk & Son Ltd.
- Davis Langdon
- Sepam
- Murphy & Sons Ltd.
- Bruce Shaw
- Henry Construction

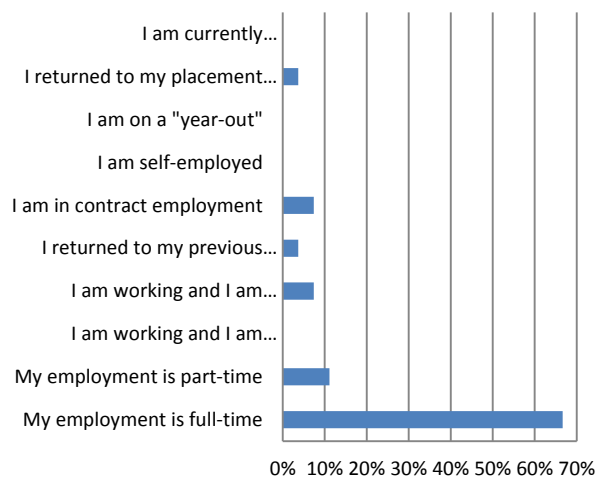
**Job Titles include:**

- Quantity Surveyor
- Civil Manager
- Project Engineer

**Salary**



**Nature of Employment**

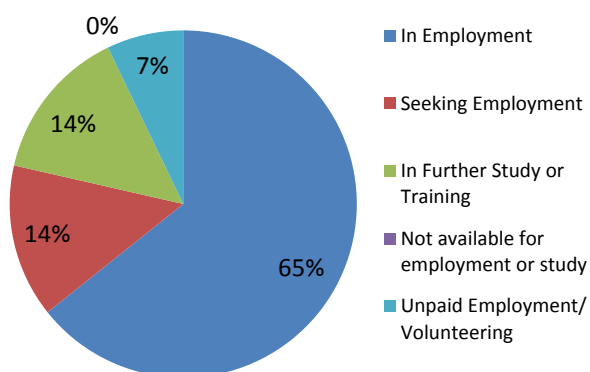


*Low salaries reflect part-time employment*

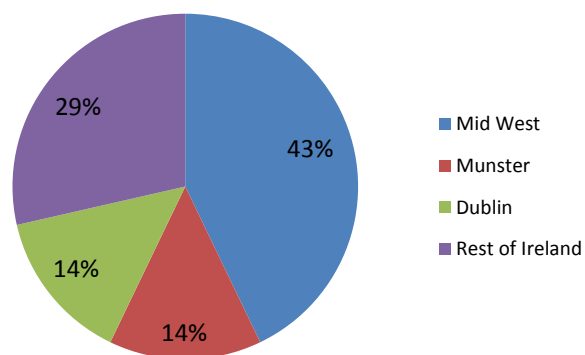
## 2.2

## B.Sc. (Hons) Construction Management

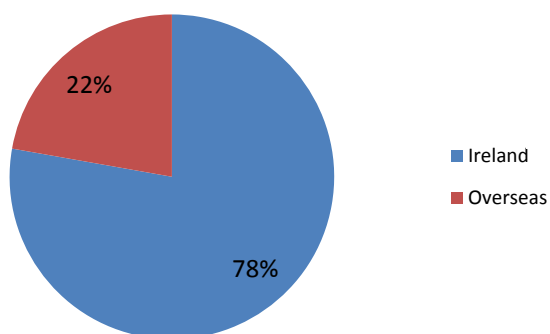
**Current Situation**



**Location of Employment Region**



**Location of Employment Ireland vs Overseas**



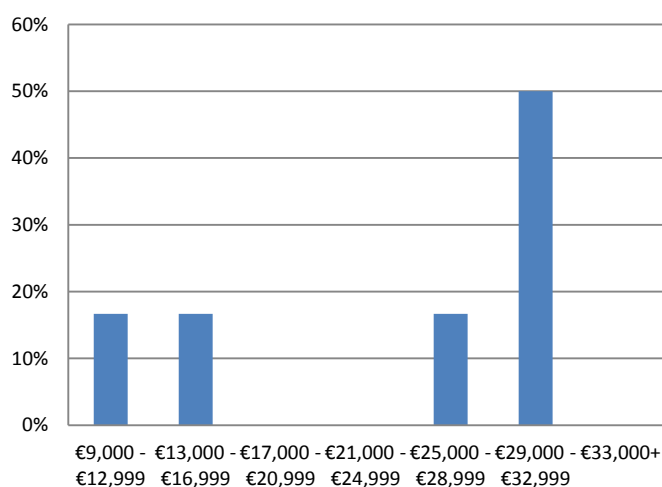
**Employers Include:**

- NRS Group
- Construction Solutions Ltd.
- Kelly Contractors

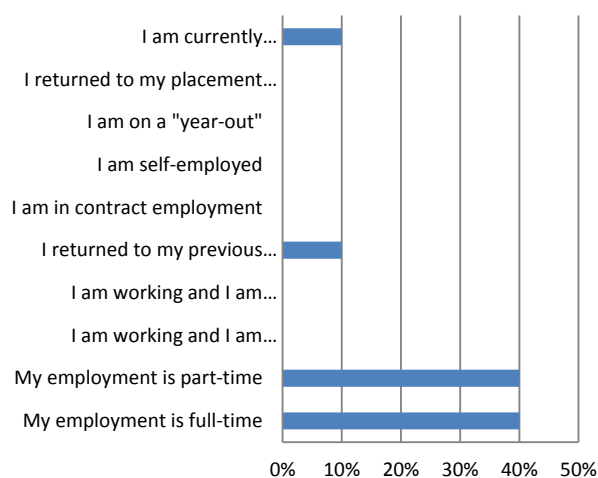
**Job Titles include:**

- Assistant Engineer
- Site Agent
- Contracts Manager
- Site Engineer

**Salary**



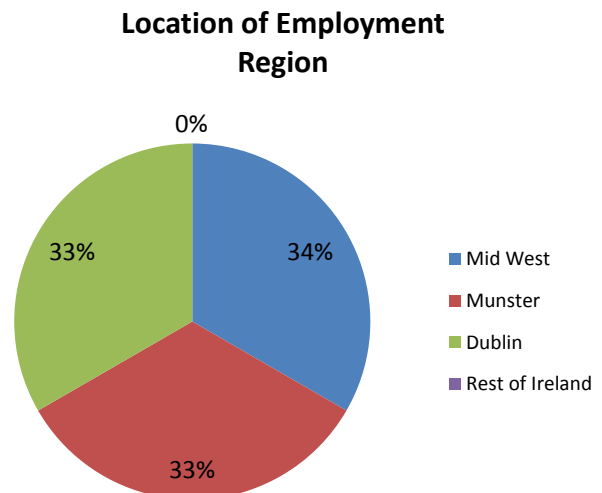
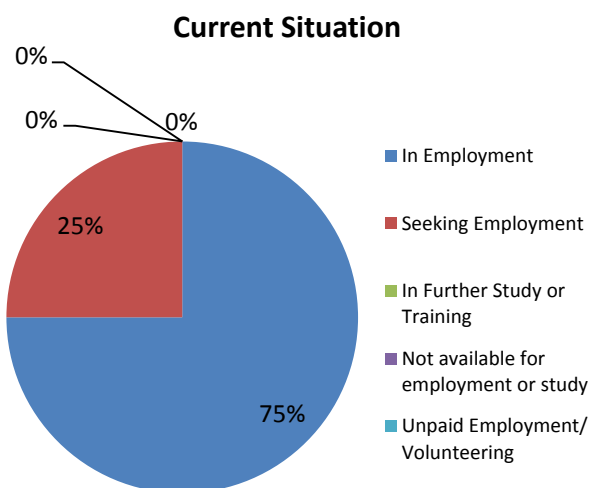
**Nature of Employment**



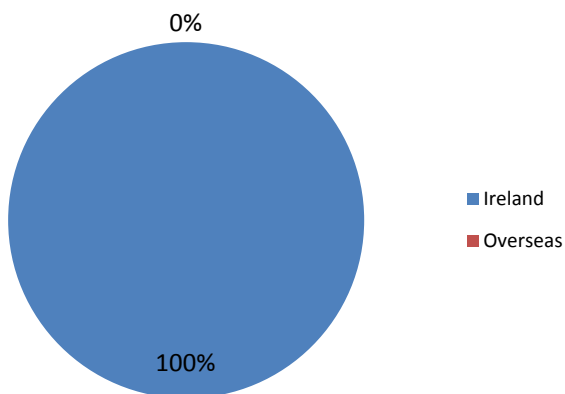
*Low salaries reflect part-time employment*

## 2.3

## B.Sc. (Hons) Property Valuation & Management



**Location of Employment Ireland vs Overseas**



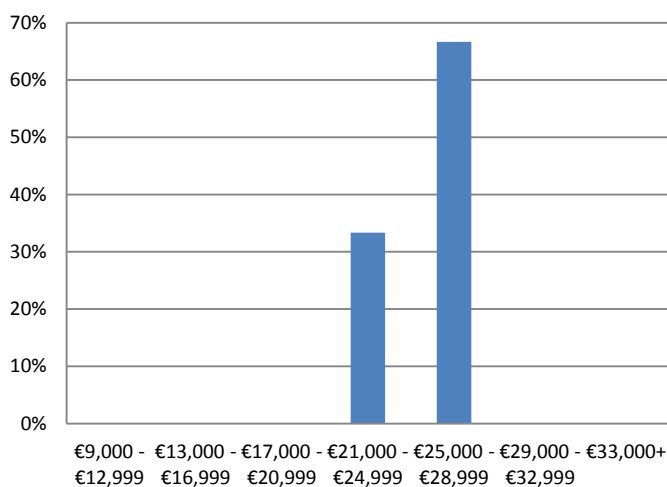
### Employers Include:

- Wyse Property Management
- Grant Thornton
- Savills

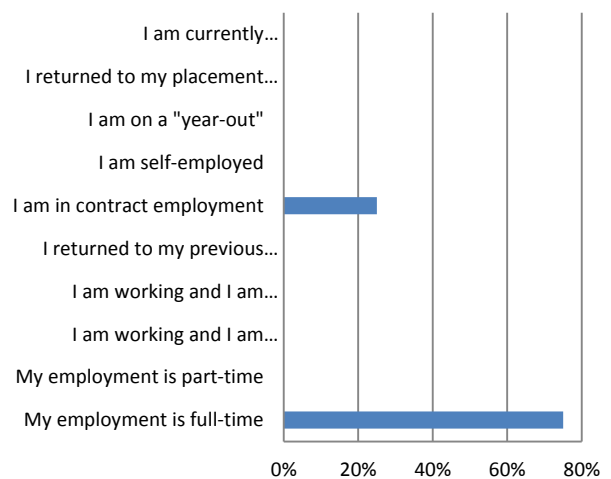
### Job Titles include:

- Property Administrator
- Property Manager

**Salary**



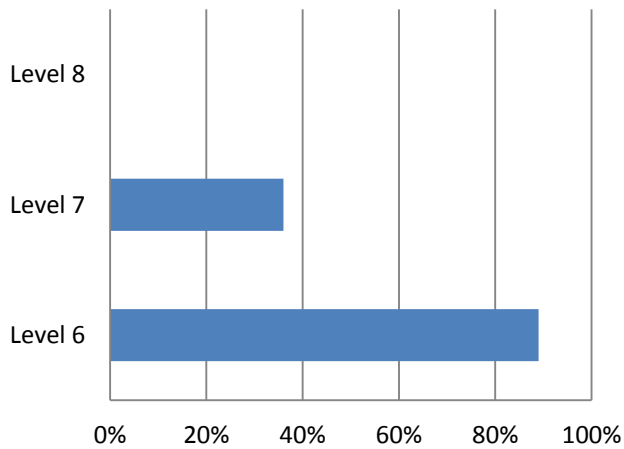
**Nature of Employment**



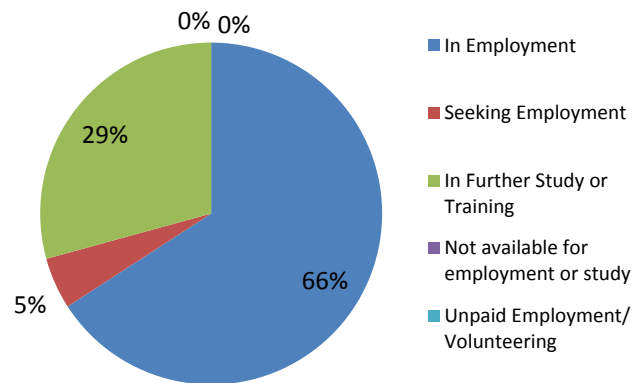
Low salaries reflect part-time employment

## 3.0 Department of Construction & Civil Engineering

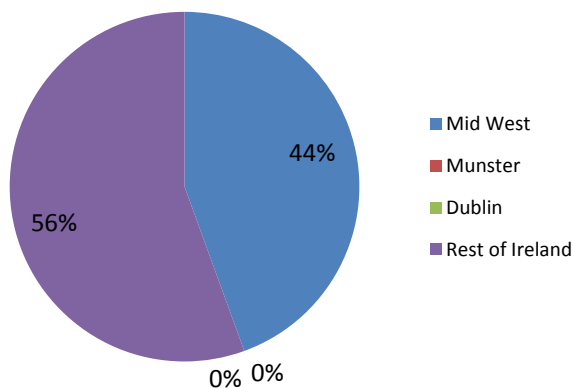
**Progression within the Institute**  
**Department Civil & Construction Engineering**



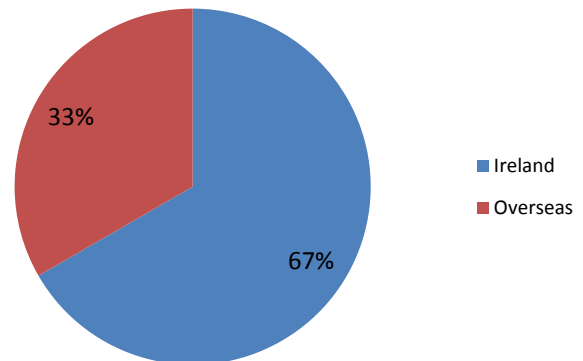
**Current Situation**



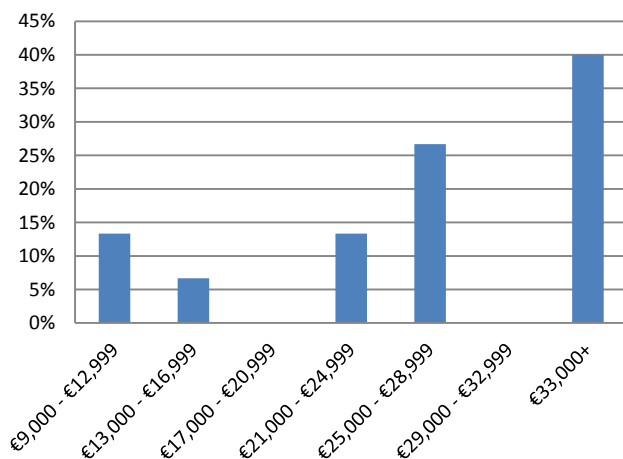
**Location of Employment**  
**Region**



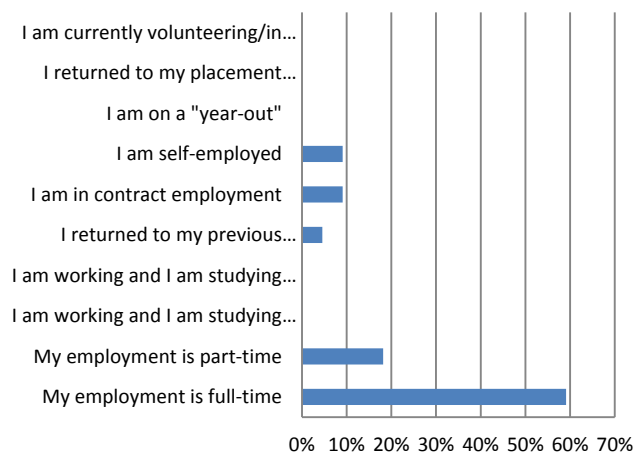
**Location of Employment**  
**Ireland vs Overseas**



**Salary**



**Nature of Employment**

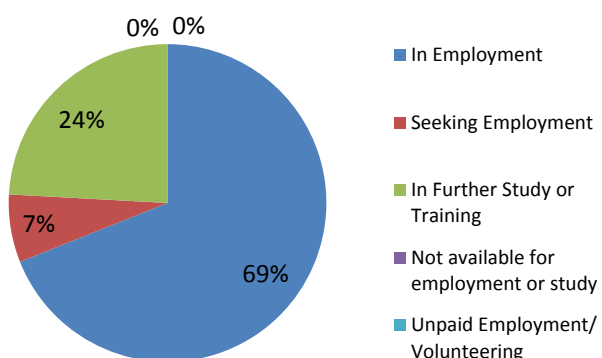


*Low salaries reflect part-time employment*

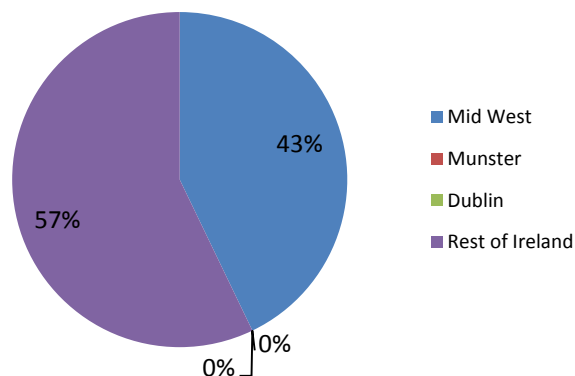
### 3.1

## B. Sc. (Hons) in Civil Engineering Management

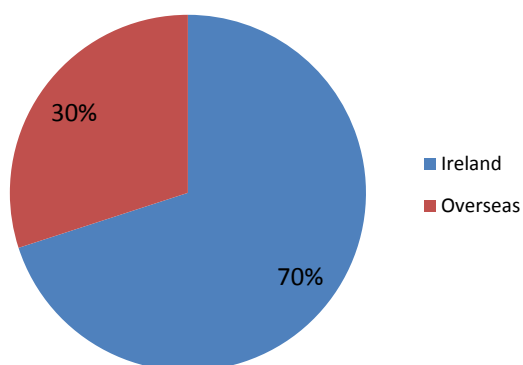
**Current Situation**



**Location of Employment Region**



**Location of Employment Ireland vs Overseas**



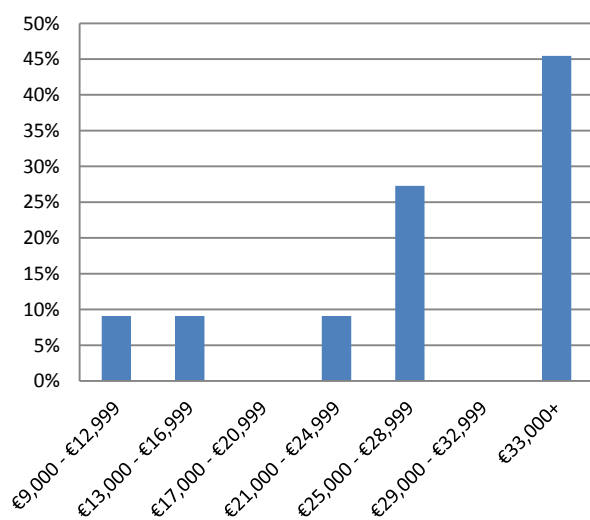
**Employers Include:**

- AM Environmental
- 4 Site Telecom
- Bam Contractors
- Shell E&P Ireland
- Coillte Teo.

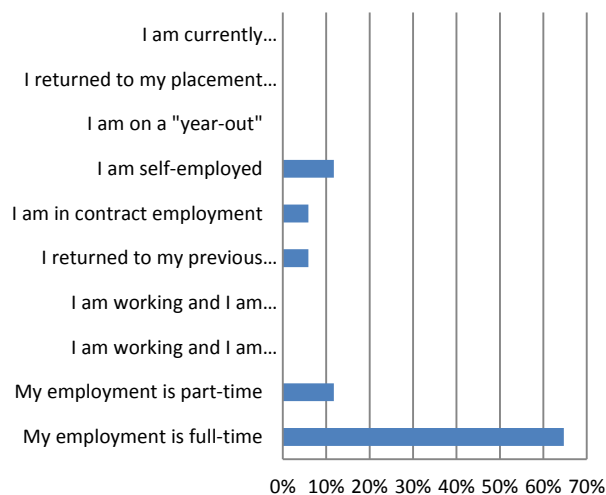
**Job Titles include:**

- Civil Engineer
- CAD Technician
- Planning Enforcement Officer
- Project Engineer
- Telecom Site Designer

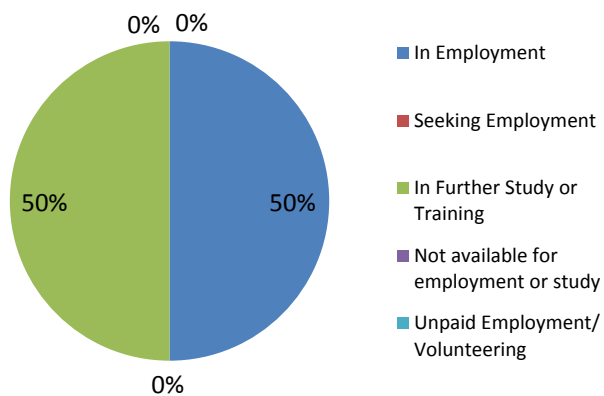
**Salary**



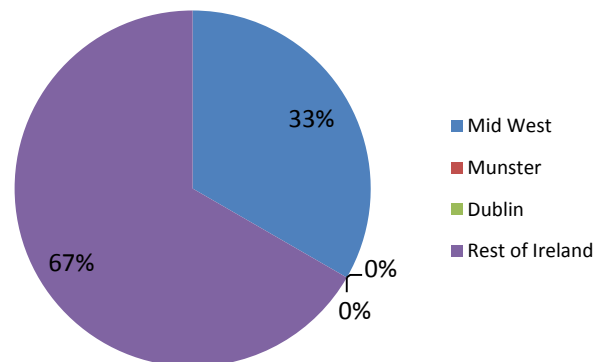
**Nature of Employment**



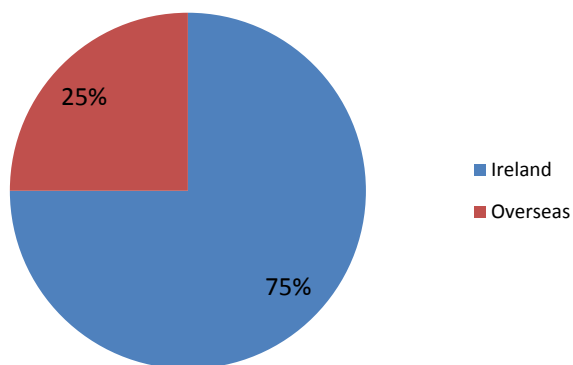
Current Situation



Location of Employment Region



Location of Employment Ireland vs Overseas



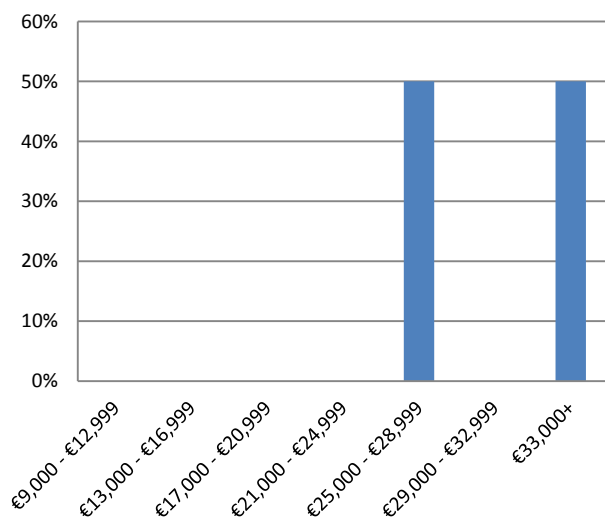
Employers Include:

- Murphy Pipe & Civil Engineering
- Galway County Council

Job Titles include:

- Civil Engineer

Salary



Nature of Employment

